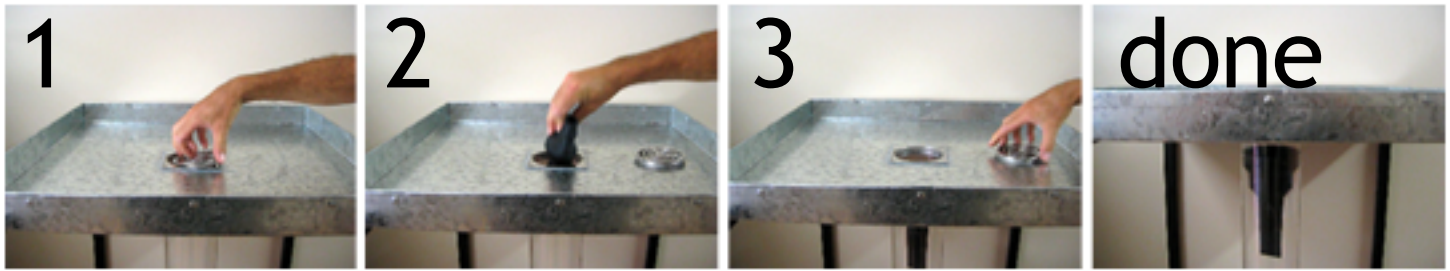


# Grate Seal Installation Instructions



1  
Unscrew and  
remove your  
grate;

2  
Insert Grate Seal  
into the  
drainage riser;

3  
Replace  
the grate;

done  
Effective  
immediately.

## INSTALLATION TIPS

1. If your grate has become stuck making it difficult to remove, insert two screwdrivers as handles to help you turn and unscrew the grate.
2. It is recommended that you remove heavy scum from the top of your drainage riser where the surface area of the Grate Seal will sit.
3. Grate Seal is flexible, so fold it and hold from the top to allow easy insertion into the drain, then push it back into shape against the pipe wall.
4. Grate Seal is a snug fit - you may need to massage it well to sit flush against the pipe wall.

**There are three standard diameters of pipes used in shower and floor waste drains world wide.**

They are 4 inch or 102mm,  
3 inch or 77mm and 2 inch or 51mm.

If you have 3 or 2 inch pipes, you will need to carefully cut the Grate Seal with a sharp blade at the points shown.

Grate Seal is still 100% effective when cut down to fit a 2 inch pipe, however we recommend that a ring of silicone be applied just below the cut line and left to set before installation. This will make up the loss of surface area between the Grate Seal and the pipe wall.

Grate Seal is suitable for use in PVC, copper, cast iron, HDPE & Earthenware pipes.

